

Table of Contents

Introduction	4	Standard Form	18, 25, 33
Tracking Sheet	6	Subtracting Fractions	9, 11, 17, 38
Numbers and Numeration	7	Answer Key	39–40
Adding Fractions	9–11, 38	Operations	41
Addition	28, 31, 37	Adding Decimals	54
Area	15	Addition	58, 60, 63, 71
Comparing Decimals	22, 26, 37	Average	56
Comparing Fractions	10, 19, 36, 38	Common Factors	42, 48
Comparing Numbers	8, 17, 20, 23, 24, 37	Common Multiples	55, 72
Division	15, 29	Division	44, 45, 50, 52–54, 57, 58, 61, 63, 64, 67, 69
Estimation	30	Exponents	48
Expanded Form	33	Factor Trees	43
Exponents	12, 16	Fractions	43, 49, 59, 71
Factor Trees	10	Math Vocabulary	42, 48
Factors	24	Money	48, 54, 61
Fractions	8, 10, 14, 18, 21	Multiplication	44, 45, 47, 49, 51, 52, 56, 58, 59, 62, 63, 70
Fractions to Decimals	11, 12, 15, 22	Multi-Step Problems	42, 44–46, 48–53, 55, . . . 57, 59–62, 65–67, 70, 72
Greatest Common Factor	18, 23, 27	Negative Numbers	59
Least to Greatest/Greatest to Least	14, 17, 19, 20, 23, 24, 28, 35	Parts of a Whole	54, 58, 70
Math Vocabulary	9, 10, 13, 20	Percent	48, 56, 57, 60, 61, 66, 68, 71
Measurement Conversions	21	Prime Factorization	43, 49, 57, 63, 68
Money	31, 33, 36	Ratios	42, 47, 58, 68, 69
Multiples	9, 20, 32	Subtraction	58, 64
Multiplication	36	Writing Equations	44, 45, 47, 55, 58, 60, 62
Negative Numbers	24–26	Answer Key	73–74
Number Lines	16, 18, 19, 30	Measurement and Geometry	75
Parts of a Whole	8, 16, 25, 27, 29, 34, 35	Algebra	85
Percent	8, 16, 20, 21, 23, 26, 28, 30, 31, 34	Angles	76, 78, 83, 85, 87, 94, 102, 105, 106
Place Value	24, 32, 33	Area	77, 81, 82, 8688, 96, 98, 104
Prime Factorization	11, 13, 19, 22, 27, 33, 35, 36, 38	Calendar	95, 98, 101
Prime Numbers	28	Circumference	77, 80, 83, 80, 91, 95, 106
Ratios	13, 15, 17, 22, 27, 32, 35		
Rounding	14, 25, 31		

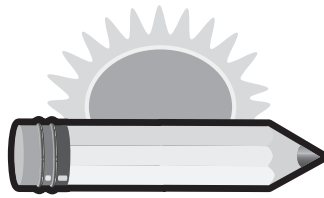
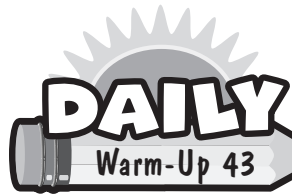


Table of Contents

Coordinates	91	124, 127–129, 132, 137, 139, 140
Division using Measurements	88	Percent to Fraction
Estimation	85	Predicting Outcomes
Fractions	100	113, 115, 118,
Line Segments	90, 93, 99, 101	120, 128, 131, 133
Lines of Symmetry	79	Presenting Graphs
Liquid Measurement Conversions	82,	114, 125, 130
87, 89, 95, 97		Probability with Spinners . . .
Math Vocabulary	80, 89	110, 113, 114
Measurement (in.)	86, 88, 92, 106	Ratios
Measurement Conversions	77–79, 84,	119
93, 95, 97, 103, 104		Reading Graphs
Multiplication using Measurements .	86, 88	118, 119, 129,
Number Lines	84, 98	134, 135, 138–140
Parallel/Perpendicular Lines . . .	84, 93, 105	Reading Tables
Parts of Shapes	76, 86, 89, 92, 94,	121
97–100, 103, 105		Answer Key
Perimeter	80, 81, 86–88, 93, 97, 100, 102	141–142
Reflection/Rotation	90, 96, 106	Algebra, Patterns and Functions
Rulers	81	143
Temperature	96, 104	Decimals to Fractions
Time	79, 93	170, 172
Units of Measurement	100, 101	Decimals to Percents
Volume	80, 82	148, 166
Answer Key	107–108	Fractions to Percents
Graphs, Data and Probability	109	148, 158,
Calculating Probability	110–115, 119,	166, 167, 172
121, 123, 125–131, 133–138		Interpreting Tables
Combinations	110–113, 116, 118, 122,	147, 149–151, 158,
123, 126, 127, 130–133		159, 162, 164–166, 169, 173
Completing Bar Graphs	130	Mean/Average
Interpreting Data	116, 117, 120, 123,	151, 152, 155, 163
125, 126, 133, 137–139		Median/Mode/Range
Interpreting Spinners	118	154
Mean/Average	119, 121, 124, 137, 140	Money
Median/Mode/Range	111, 112, 117,	152, 170
		Number Patterns
		152, 153, 160, 163
		Number Patterns with Equations
		145,
		147, 160
		Percents to Fractions
		167
		Ratios
		144, 145, 147–149, 151, 154–158, . . .
		161–165, 167–169, 171–174
		Shape Patterns
		162, 169
		Solving Equations
		145–147, 150, 152, . . .
		153–155, 159, 160, 168, 171
		Word Problems
		158, 169, 170
		Word Problems with Patterns
		159
		Writing Equations
		144, 149–151, 155,
		157, 159, 161, 165, 166, 168, 171–174
		Answer Key
		175–176



Name _____ Date _____

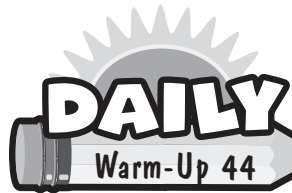
1. Sue has 120 pennies. 25% of the pennies are dated 1930, 25% of the pennies are dated 1920, and 50% are dated 1910. How many pennies of each date does Sue have? Write each answer in the table below.

Date	Number of Pennies
1930	
1920	
1910	

2. Four classmates had an assignment to make a 7-digit number that is divisible by 3. Which person did the assignment correctly? (*Circle the correct letter.*)

- A. Kyle
B. Sandra
C. Michael
D. Jeffrey

Friend	Number
Jeffrey	687,096
Michael	1,587,039
Sandra	2,578,031
Kyle	1,687,093



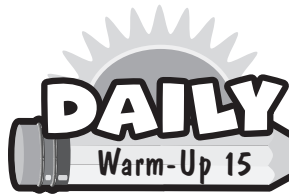
Name _____ Date _____

1. Mary bought a package of buttons she plans to sew on a dress she is making. She wanted to place an equal number of buttons down each side of the dress. When she opened the package, she found that it was **not** possible. Which of the following could be the total number of buttons in the package Mary bought? (*Circle the correct letter.*)

- A. 24 B. 28 C. 32 D. 35

2. Robin and Terry each bought a box of chocolate. There were 16 pieces of chocolate in each box. Robin now has $\frac{1}{4}$ of the pieces of chocolate left, and Terry has $\frac{1}{8}$ of the pieces of chocolate left. Which is true about the number of pieces of chocolate Robin and Terry have left? (*Circle the correct letter.*)

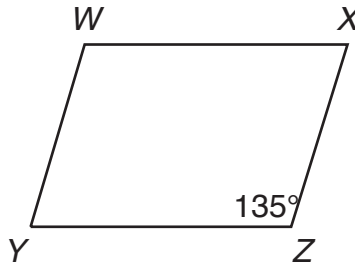
- A. Robin has 14 pieces and Terry has 2 pieces left.
B. Robin has 4 pieces and Terry has none left.
C. Robin has 4 pieces and Terry has 2 pieces left.
D. Terry has more pieces of chocolate left than Robin.



Name _____ Date _____

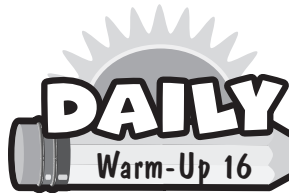
1. Mrs. Mann is teaching a geometry lesson to her students. She draws the shape below on the board. She asked her students to find the measure of angle W of the parallelogram. If her students answered correctly, what answer did they give? (*Circle the correct letter.*)

- A. 45°
 B. 135°
 C. 180°
 D. 145°



2. Agnes is sewing a blanket from pieces of scrap fabric. She cuts a circle with a circumference of 24 inches. What could be done to find the **diameter** of the circle Agnes cut for the blanket? (*Circle the correct letter.*)

- A. add $24 + \pi$
 B. divide 24 by π
 C. multiply $24 \times \pi \times 2$
 D. subtract 24 from π



Name _____ Date _____

1. Which of the following could **not** be the measure of the angles of a triangle? (*Circle the correct letter.*)

- A. 60° 90° 30°
 B. 55° 75° 50°
 C. 120° 30° 30°
 D. 133° 90° 45°

2. What type of angle is angle Y ? (*Circle the correct letter.*)

- A. right
 B. acute
 C. rotation
 D. obtuse

