

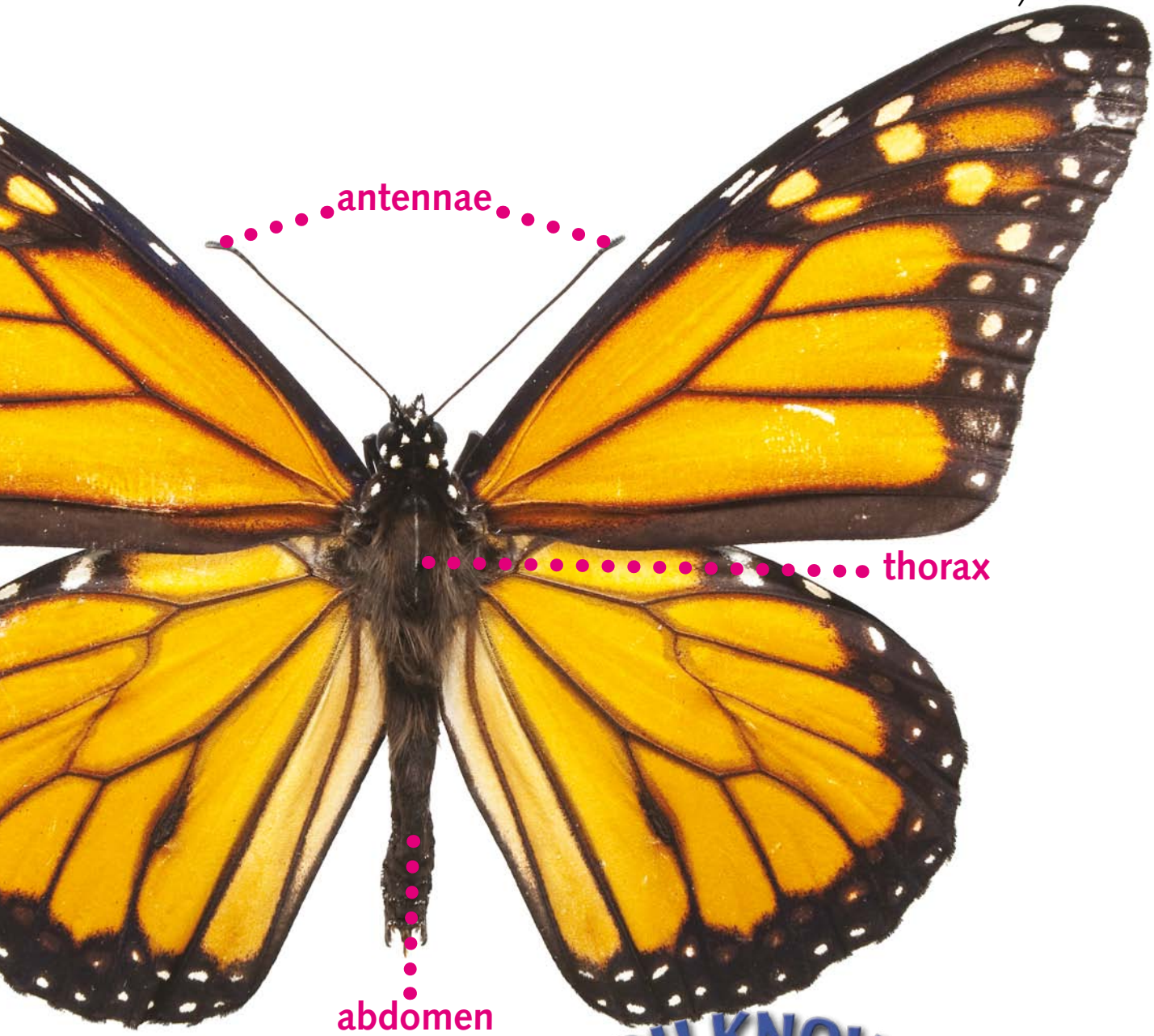
Insect Beauties

Butterflies and moths belong to the insect group of animals. They have bodies divided into three sections called the head, **thorax**, and **abdomen**. The head has eyes and **antennae**. Wings and feet attach to the thorax.



Hawk moth





DID YOU KNOW?

A butterfly or moth smells with its antennae and tastes with its feet.

Wonderful Wings

Many butterflies and moths sip flower nectar for energy; while others dine on moist, rotting fruit, tree sap, or animal waste. They find partners and lay eggs to begin the life cycle again. Near summer's end, some kinds **migrate** to warm wintering grounds.

Zoos and nature centers often plant gardens especially for butterflies and moths. The gardens contain flowering plants that butterflies, moths, and their caterpillars like. Plant a few favorites in your yard!



Female butterflies and moths lay several hundred eggs in their lifetime. Few become adults, as little as one or two out of every 100 eggs laid.



Blue morpho butterflies, like other adult butterflies, cannot chew. They drink their food instead.



DID YOU KNOW?

Monarch butterflies migrate south in the fall. Monarchs return each spring to lay eggs.